

>> Digital Workflow

Version: CorelDraw for Windows



>> Generating Composite PS for CorelDraw 10

>> 1. Recommended printer driver: current adobe driver. If no printer driver is available, please install.

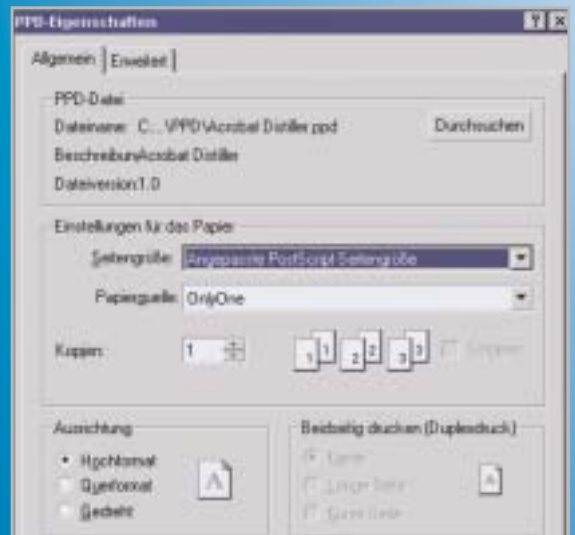
>> 2. Once installed, call up the Adobe printer driver program again. Follow the instructions on the screen until you get to the question, "How is the printer connected to the computer?" Select "Local Printer". Click on "OK". Select "FILE: Local Port". Click "OK". Click on "Search" and go the list containing Acrobat PPD. Select this and click "OK", then confirm this by clicking "OK" again. Give your printer a name, for example, Print_to_file, and select "No" to the other options. Click "OK" and confirm with "Install". Should you want to configure your printer, enter "=NO", then click "OK" and "Close". Press "Start" to begin the program again.

>> 3. After installing, choose the commands Data > Printer Setup... . Select the printer you have just installed (Print_to_file). Then go to Properties and select under Page Size "Page Size adjusted for PostScript". When you select this, another window will open. You must enter your document format here, adding an extra 25.4 mm (see figs. 1+2).

①



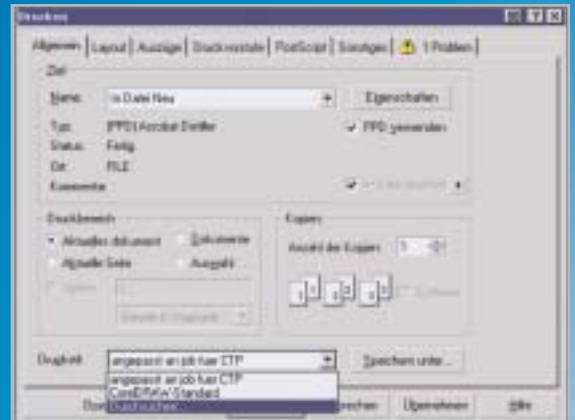
②



>> 4. Print Styles

CorelDraw 10 allows you to define, store or load print styles onto the printer menu. If a suitable print style has not been installed, a new one can be created or an existing one downloaded. To load a font follow the commands Print... > Format > Font > Search... . The "Composite PostScript" font can now be selected on the CorelDraw 10 printer menu, this will automatically determine all other settings apart from paper format. Nevertheless, all the printer menu's tabs are individually listed so that they can be checked. Selection of fonts on the CorelDraw printer menu (see fig. 3).

3



>> 5. "General" Window on the Printer Menu

Composite PostScript should be selected under "Name:" and the pages required (see fig. 4).

Note: It is essential for multi-page documents to be double page spreads, correctly imposed according to our imposition schemes.

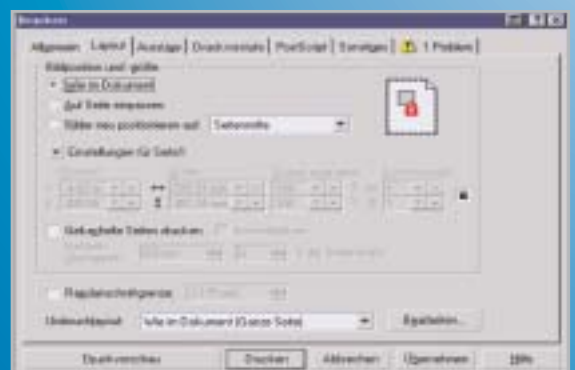
4



>> 6. "Layout" Window

The "As in Document" check box must be enabled for picture position and size (see fig. 5).

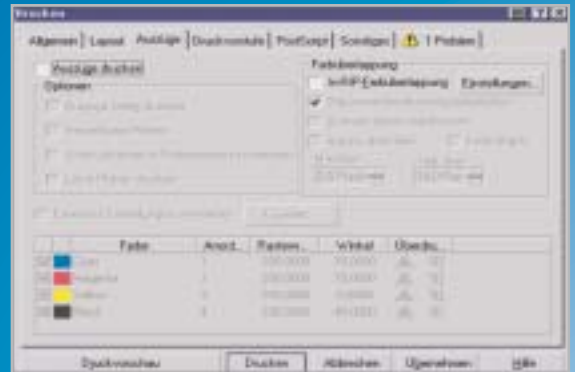
5



>> 7. "Separations" Window

Nothing needs to be enabled in this window when generating Composite PS (see fig. 6).

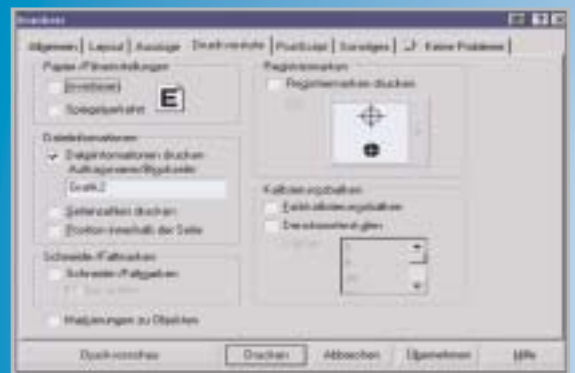
6



>> 8. "Prepress" Window

Enable the "Print file information" check box. This information is important for the printer (see fig. 7).

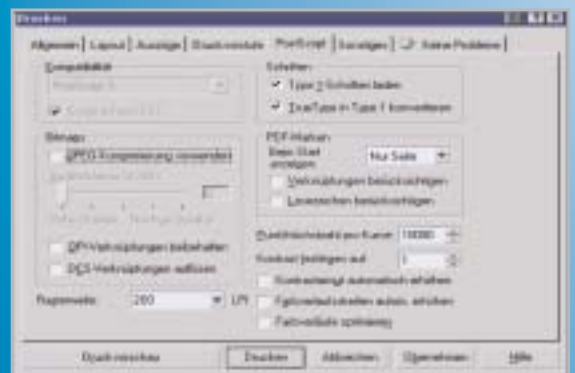
7



>> 9. "Postscript" Window

It is vital that 150 lpi be entered under "Grid Spacing" and that both font options be enabled (see fig. 8).

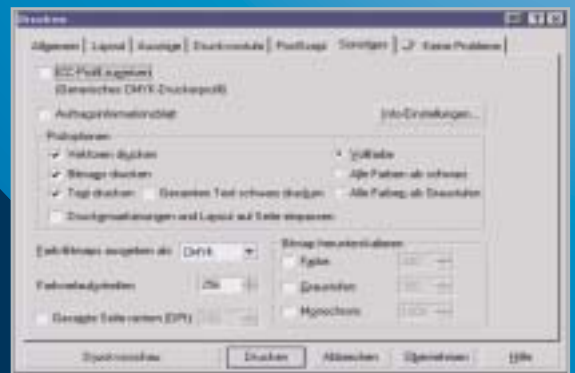
8



>> 10. "Miscellaneous/Other" Window

"Allocate ICC Profile" remains disabled (see fig. 9).

9



>> 11. Both the file name and location after saving must be specified when the print command is given.

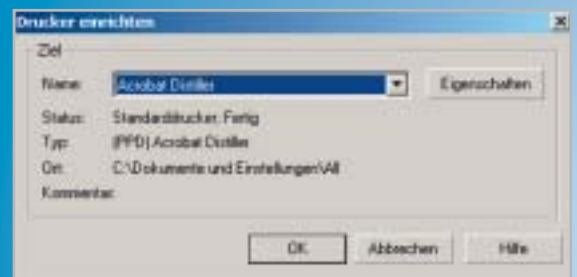
>> Generating Composite PS for Corel Draw 11

>> 1. Recommended printer driver: current adobe driver. If no printer driver is available, please install.

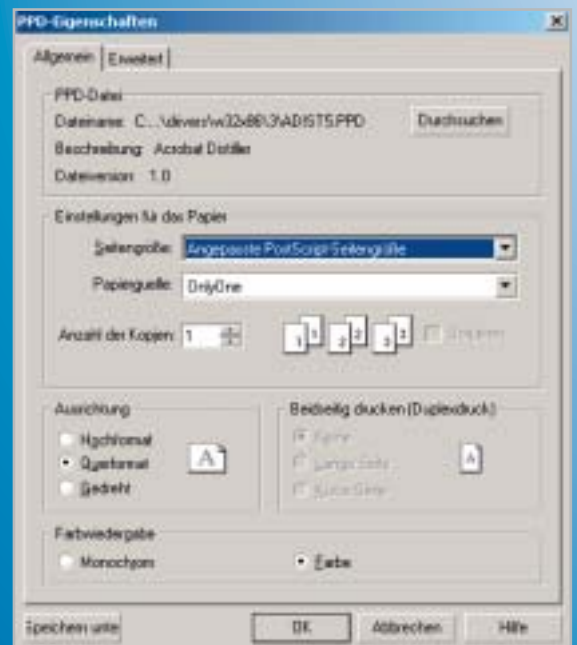
>> 2. Once installed, run the Adobe printer driver program again. Follow the instructions on the screen until you get to the question, "How is the printer connected to the computer?". Select "Local printer". Click on "OK". Select "FILE: Local Port". Click "OK". Click on "Search" and go the list containing Acrobat PPD. Select this and click "OK", then confirm this by clicking "OK" again. Give your printer a name, for example, Print_to_file, and select "NO" to the other options. Click "OK" and confirm with "Install". Should you want to configure your printer, enter "=NO", then click "OK" and "Close". Press "Start" to begin the program again.

>> 3. After installing, choose the commands Data > Printer Setup... . Select the printer you have just installed (Print_to_file). Then go to Properties and select under Page Size "Page Size adjusted for PostScript". When you select this, another window will open. You must enter your document format here, adding an extra 25.4 mm (see figs. 1+2).

①



②



>> 4. Printing Styles

CorelDraw 11 allows you to define, store or load print styles onto the printer menu. If a suitable print style has not yet been installed, a new one can be created or an existing one downloaded. To load a print style follow the commands Print... > Format > Font > Search... . The "Composite PostScript" font can now be selected on the Corel Draw 11 printer menu; this will automatically determine all other setting apart from paper format. Nevertheless, all the printer menu's tabs are individually listed below so that they can be cross-checked. Selection of print styles on the CorelDraw printer menu (see fig. 3).

3



>> 5. "General" Window on the Printer Menu

Composite PostScript should be selected under "Name:" and the pages required. Note: It is essential for multi-page documents to be double page spreads, correctly imposed according to our imposition schemes.

>> 6. "Layout" Window

The "As in Document" check box must be enabled for picture production and size (see fig. 4).

4



>> 7. "Separation" Window

Nothing needs to be activated in this window when generating Composite PS (see fig. 5).

5



8. "Prepress" Window

Activate the "Print File Information" command. This information is important for the printer (see fig. 6). This can also be used to enable the "Crop & Bleed" and "Print Registration Marks" check boxes.

6



>> 9. "Postscript" Window

It is vital that 150 lpi be entered under "grid spacing" and that both font options be enabled (see fig. 7).

7



>> 10. "Postscript" Window

"Allocate ICC profile" remains deactivated (see fig. 8).

8



>> 11. Both the file name and location after saving must be specified when giving a command to print.